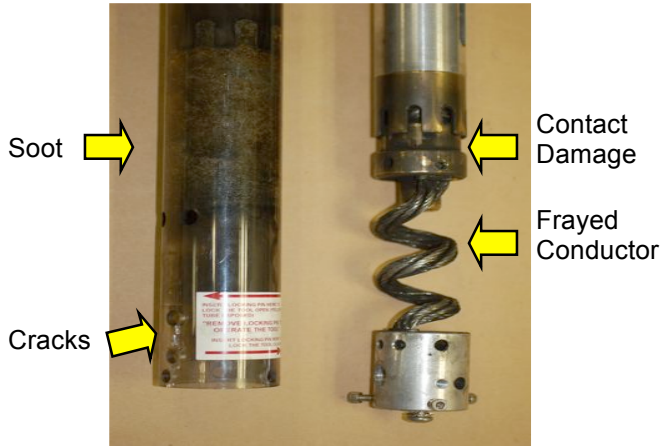
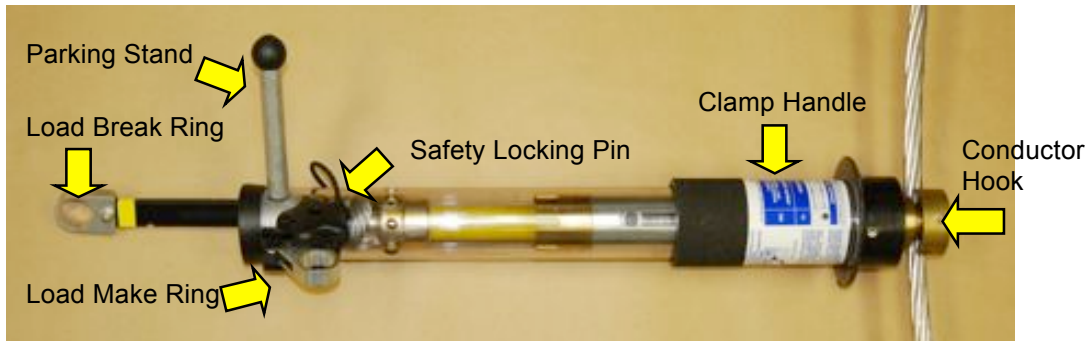


Field Inspection Procedure for *Utility Solutions Inc. Break-Safe®* Load-Break & Load-Pickup Jumper Clamp. This procedure applies to catalog numbers starting with USBS-15, USBS-27 and USBS-46.



Visually inspect the tool for

- Soot or Dirt buildup on components
- Damage to contacts
- Cracks ¼ inch or longer in outer tube
- Frayed conductor
- Damage to Conductor Hook (Not Shown)
- A loose Parking Stand (Not Shown)
- General Damage
- Confirm the tool has an Inspection sticker and that it has **not expired**

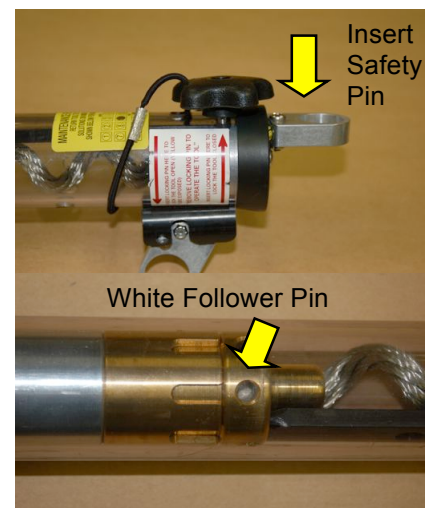
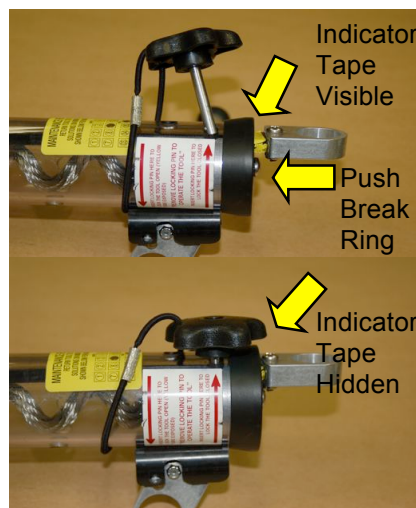
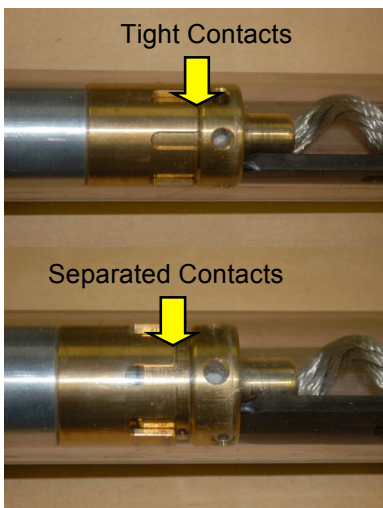
If any of the above are found, return the tool for service prior to use.

Operator Checkout: The following steps should be performed prior to **each** use of this tool.

1) Confirm that the Make contacts are tightly closed.

2) If the Make contacts are separated, push the Break Ring.

3) Insert the Safety Locking Pin. Confirm the white follower pin is visible through the vent hole.



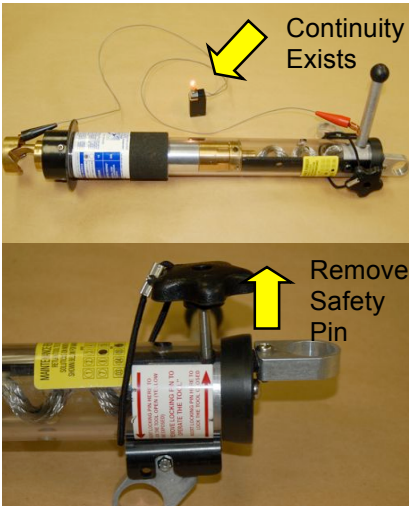
Utility Solutions, Inc.

101 33rd Street Drive SE
 Hickory, NC 286032
www.utilitysolutionsinc.com

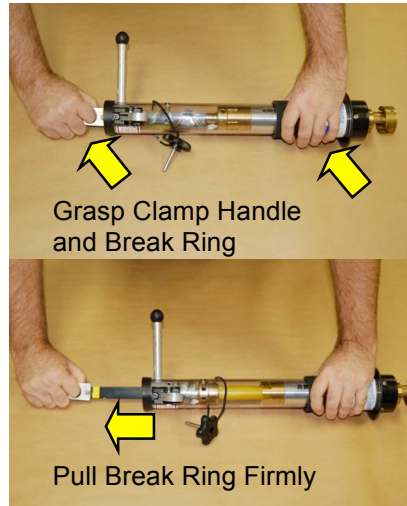
Telephone (828) 323-8914
 Fax (828) 323-8410
sales@utilitysolutionsinc.com

This procedure instructs field personnel on how to properly inspect the tool prior to use. This procedure does not guarantee the tool is in perfect working order. However, it should determine if any major problems exist requiring tool repair. This procedure does NOT eliminate the need for periodic maintenance (cleaning and inspection).

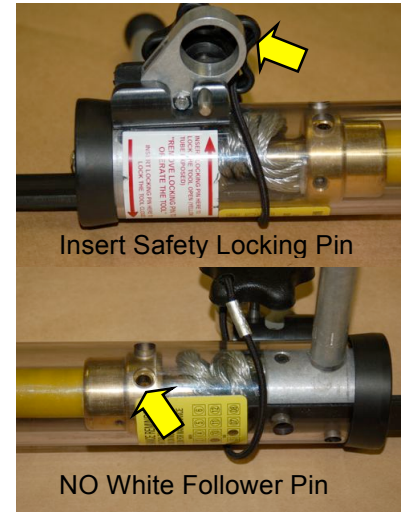
4) Confirm continuity exists between the Parking Stand and Conductor Hook. Remove the Safety Locking Pin.



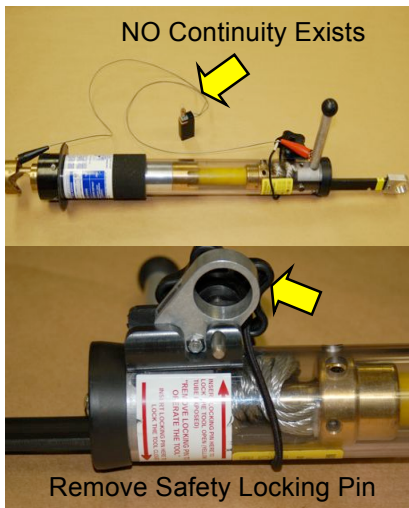
5) Grasp the Clamp Handle in one hand and the Break Ring in the other. Firmly and smoothly pull the Break Ring until the contacts lock fully open.



6) Insert the Safety Locking Pin. Confirm the white follower pin is NOT visible through the vent hole.



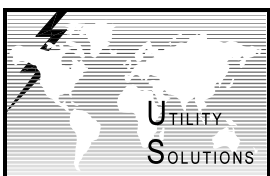
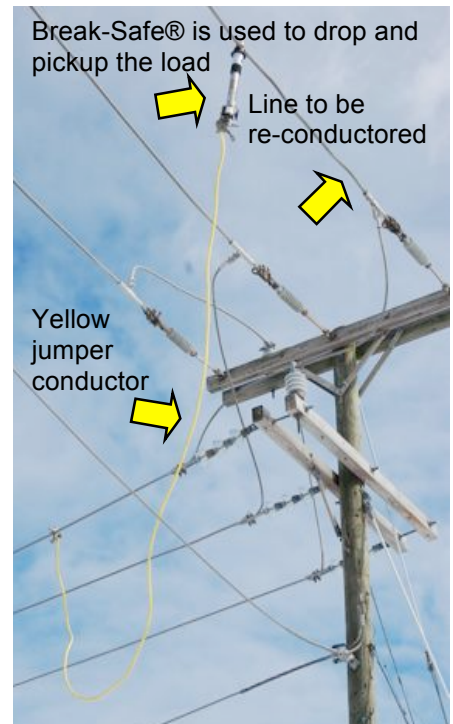
7) Confirm NO continuity exists between the Parking Stand and Conductor Hook. Remove the Safety Locking Pin.



8) Grasp the Clamp Handle and the Make Ring. Pull the Make Ring allowing the mechanism to quickly and completely close. The Make Contacts should be tightly closed as in Step 1. The device is now ready for use.



An example application of the Break-Safe® Load Break/Make Tool



Utility Solutions, Inc.

101 33rd Street Drive SE
 Hickory, NC 286032
www.utilityolutionsinc.com

Telephone (828) 323-8914
 Fax (828) 323-8410
sales@utilityolutionsinc.com