

Conductor Cleaning Brush (patent pending)

Instruction Manual C-01960 (8-3-20)



USCC-010
1/8" - 3" Conductors



USCC-011
3" - 11" Conductors

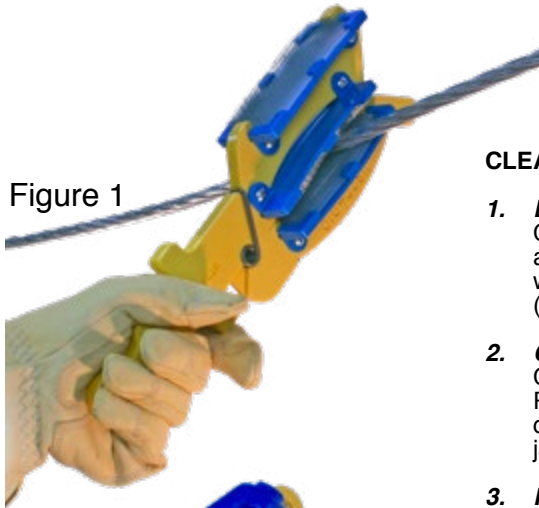


Figure 1

CLEANING MODES

1. **Back and Forth:** Push the Conductor Cleaning Brush over the conductor and allow the spring-loaded jaws to clean while using a back and forth motion (Figure 1).
2. **Circular:** Push the Conductor Cleaning Brush over the conductor. Rotate around the conductor in both directions allowing the spring-loaded jaws to clean (Figure 2).
3. **Flat Surfaces:** The outside pad on the Conductor Cleaning Brush can scrub flat surfaces (Figure 3).

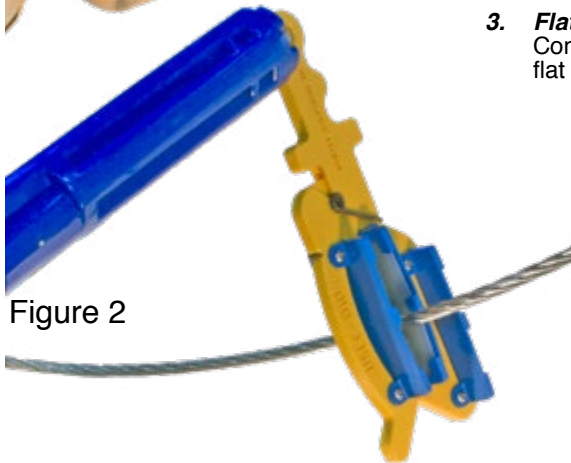


Figure 2



Figure 3



Figure 4

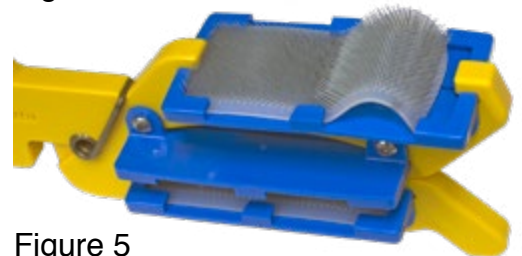


Figure 5



Figure 6

PAD REPLACEMENT

1. Remove the old pad by removing one corner from the pad holder as shown (Figure 4).
2. Pull out the pad between the outer tabs (Figure 6).
3. Insert a new pad between the outer tabs as shown (Figure 6). Carefully bend the end so both corners can slide into the pad holder (Figure 5).

USCC-010-PADS
USCC-011-PADS

REPLACEMENT PAD SET(3)

Phone (828)323-8914
Email sales@utilityolutionsinc.com
Web www.utilityolutionsinc.com
101 33rd Street Drive SE · Hickory, NC 28602

